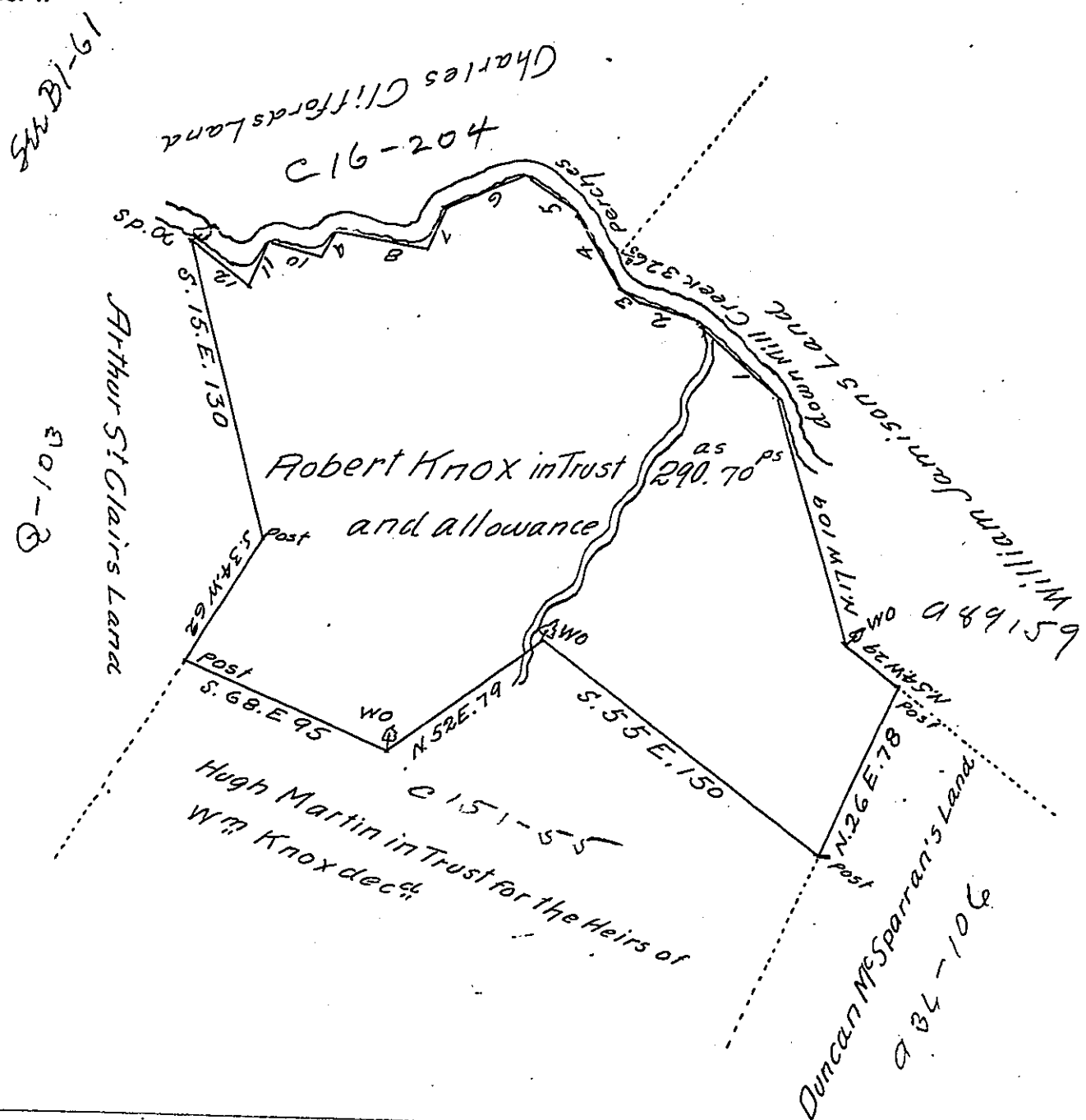


No of Courses	Courses down Mill Creek	Distance
1	N.50.W	51
2	N70.W	32
3	N47.W	92 <sup>2</sup> / <sub>3</sub>
4	N30.W	26
5	N60.W	26
6	S.65.W	40
7	S.20.W	15
8	N82.W	40
9	S30.W	10
10	N82.W	24
11	S.16.W	20
12	N46.W	33
Total Distance		326 <sup>2</sup> / <sub>3</sub>



In pursuance of a Warrant dated June 27<sup>th</sup> 1786. was Survey'd for Robert Knox in Trust for the Heirs of William Knox Dec<sup>d</sup>. the above described Tract of Land Containing Two Hundred & ninety acres & Seventy perches with an allowance proportioned to six p. Gent. Situate on the Waters of Mill Creek adjoining Land of Gen<sup>l</sup>. Arthur St. Clair and others in Fairfield Town<sup>sh</sup>. in the County of Westmoreland. Survey'd June 12<sup>th</sup> 1787

John Moore D.S.

To John Lukens Esq<sup>r</sup>. Surv<sup>r</sup>. Gen<sup>l</sup>.

IN TESTIMONY that the above is a copy of the original remaining on file in the Department of Internal Affairs of Pennsylvania, made conformably to an Act of Assembly approved the 16th day of February, 1833, I have hereunto set my Hand and caused the Seal of said Department to be affixed at Harrisburg, this second day of June 1905

*James R. Brown*  
Secretary of Internal Affairs.